



Oak Leaf Apartments

SW19 6RY

Contents

Introduction	2
The Area	4
Location	6
Specification	8
Floor Plans	10-23
Developer Details	24





Oak Leaf Apartments

Oak Leaf Apartments is a bespoke development of 29 contemporary one, two and three bedroom apartments. These high specification apartments are optimally located in Southfields (Zone 3), allowing residents easy access to some of the most renowned landmarks in South-West London.

Six miles from central London, Southfields is sandwiched between Putney and Wandsworth to the north, Earlsfield to the east, Wimbledon to the south and Putney Heath and Roehampton to the west; making it the perfect area for young professionals and families.

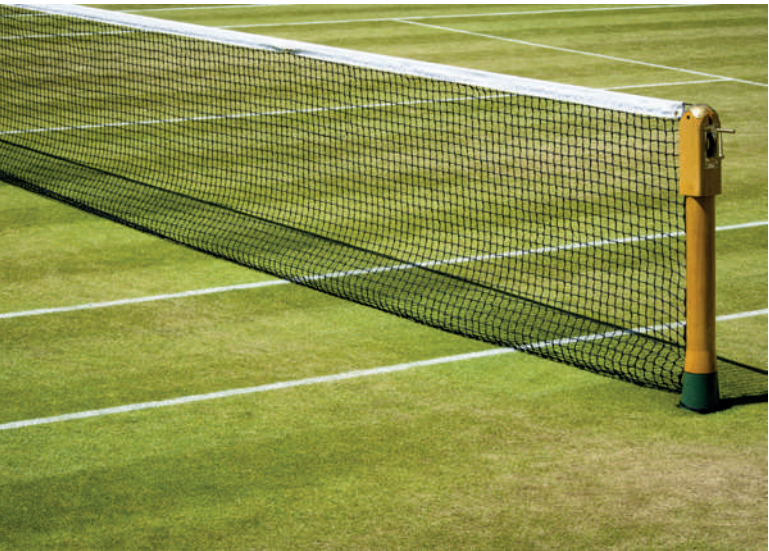
The Area

Whether you're seeking village charm, a park side idyll or high street convenience, Oak Leaf Apartments is perfectly situated in Southfields (Zone 3), placing visitors within walking distance of some of South-West London's most celebrated landmarks. Not only is Southfields situated six miles from central London, but it is also set between Putney and Wandsworth to the north, Earlsfield to the east, Wimbledon to the south and Putney Heath and Roehampton to the west.

Nearby Wimbledon Common is the largest expanse of heathland in London at more than 1,000 acres and is a designated conservation area. It includes a windmill, numerous ponds and lakes, the remains of an iron age fort and two nature reserves. Go jogging, cycling or walking, or even join in with the parkrun held every Saturday morning which usually sees more than 300 runners

take on a 5km route. King George's Park is a smaller space north of the area, but it encompasses an adventure playground, nature walks and a one o'clock club for children. Wimbledon Park has a cafe and tennis courts, as well as the Wimbledon Park Watersports Centre, which offers sailing, kayaking and windsurfing.




The area is also home to the All England Lawn Tennis Club, the home of the globally celebrated Wimbledon Championships. Every summer thousands of tennis fans visit the area to enjoy the biggest contest in tennis. For the rest of the year Southfields enjoys a relatively quiet village feel thanks to its desirable tree-lined streets and spacious Edwardian houses. The high street is home to a range of amenities including a local butchers, cafés, grocers and other small businesses as well as the usual high street chains.

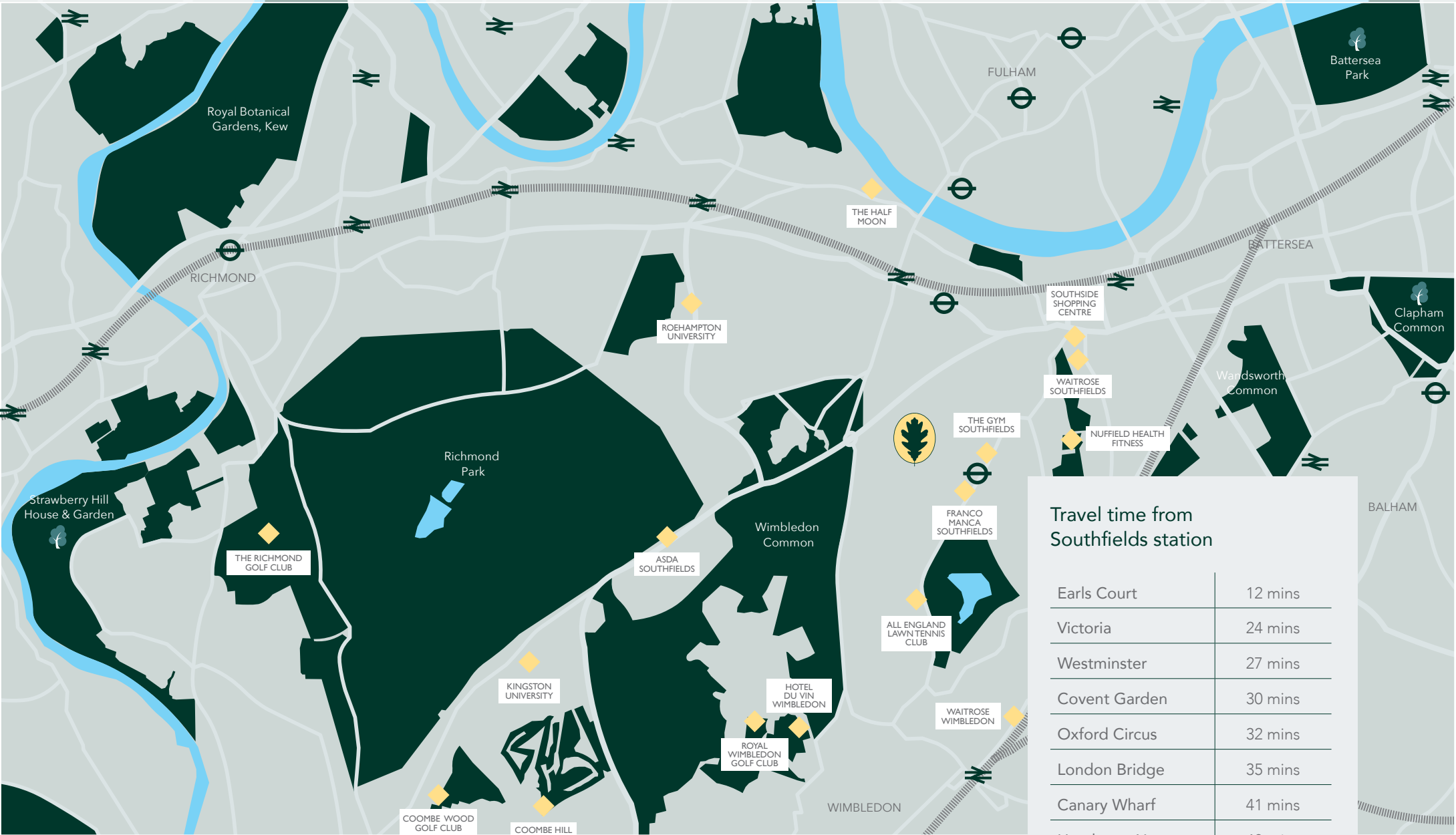


Location

Whether you're seeking village charm, a park side idyll or high street convenience, Oak Leaf Apartments places you within walking distance of South-West London's most treasured spots. From the vast swathes of parkland covering Wimbledon Common to the delightful shops and cafés of Southfields, you'll find something to satisfy every mood and every taste. Start your morning with a leisurely brunch, a spot of shopping, and see where the day takes you. Southfields is conveniently located for quick access to the A3 motorway, with the M25 only a 30 minute drive away.

A short walk to Southfields brings you to the District line, from where you can be on Murray Mound in just six minutes. Travel the tube in the other direction and you can be amongst the outstanding boutiques of Sloane Square in 19 minutes, or to the south coast connections of Victoria in just 23 minutes. You'll also benefit from the brilliantly connected South West Trains line running through Putney. From here you can be at Clapham Junction, ready for your onward journey in just seven minutes. Alternatively why not hop on your bike and enjoy a leisurely cycle; go for a stroll in Putney Heath just four minutes' walk from your front door.

-  Oak Leaf Apartments
-  London Underground
-  National Rail



Travel time from Southfields station

Earls Court	12 mins
Victoria	24 mins
Westminster	27 mins
Covent Garden	30 mins
Oxford Circus	32 mins
London Bridge	35 mins
Canary Wharf	41 mins
Heathrow Airport	48 mins
City Airport	56 mins
Gatwick Airport	60 mins

Specification

General

- RAL 7015 grey windows
- Karndean flooring throughout living room and dining room
- LED downlights with dimmers
- Balcony to all apartments

Kitchen

- Two tone matt finished contemporary, handleless kitchen units
- 20mm stone worktops and upstand
- Integrated Siemens appliances (microwave, oven and hob)
- Integrated fridge / freezer, washer-dryer, dishwasher appliances
- Wine cooler

Bathroom

- Textured stone effect tiling to walls
- Porcelanosa floor tiles / wall tiles
- Stainless steel electric towel rails
- Rainfall shower heads
- Underfloor heating to bathroom

Bedrooms

Bespoke fitted wardrobes (to master bedroom only)

Exterior, AV Door Entry, Fire & Security

- Video door entry system with colour monitors
- Dual TV/FM including SkyQ points to all living rooms and bedrooms
- Nest third generation learning thermostat, enabling remote access to heating and hot water through your mobile phone
- Secure cycle storage
- Private bin storage


Warranty

- All apartments come with an IWC ten year warranty
- Valiant Boiler – 2 Years warranty

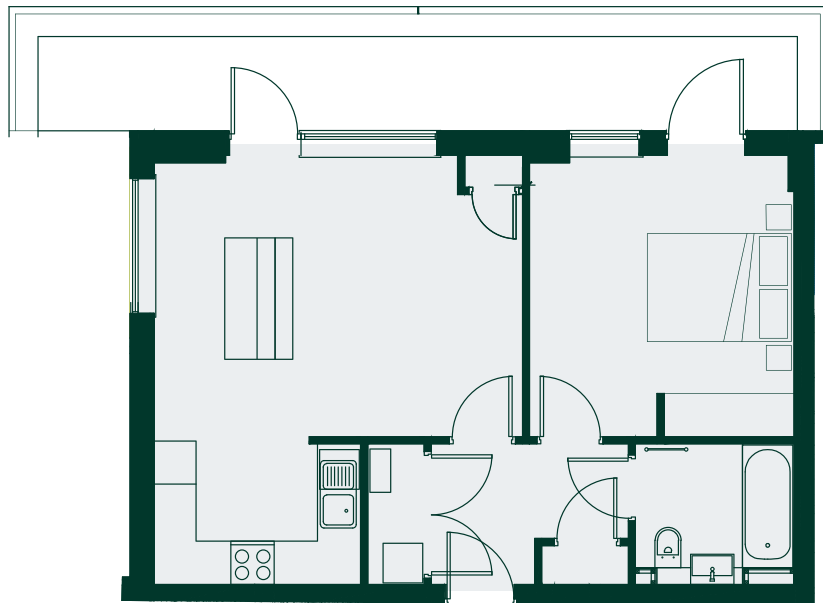


Help To Buy

Help to Buy is a government scheme allowing first time buyers of a new flat or house to borrow up to 40% of the property's value (20% outside London). These schemes are available to first-time buyers or homeowners who want to buy a brand-new home with a purchase price of up to £600,000.

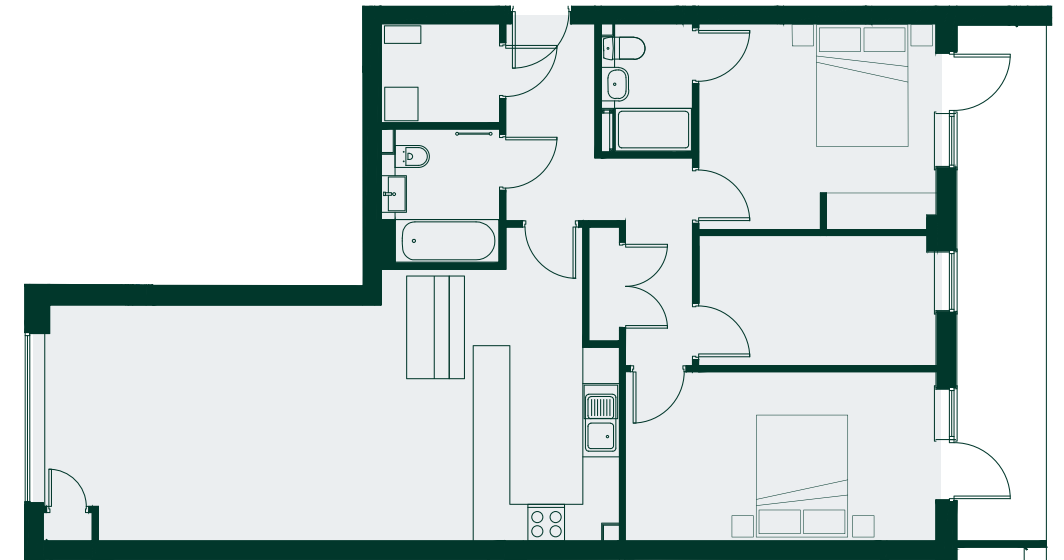


Backed by
HM Government



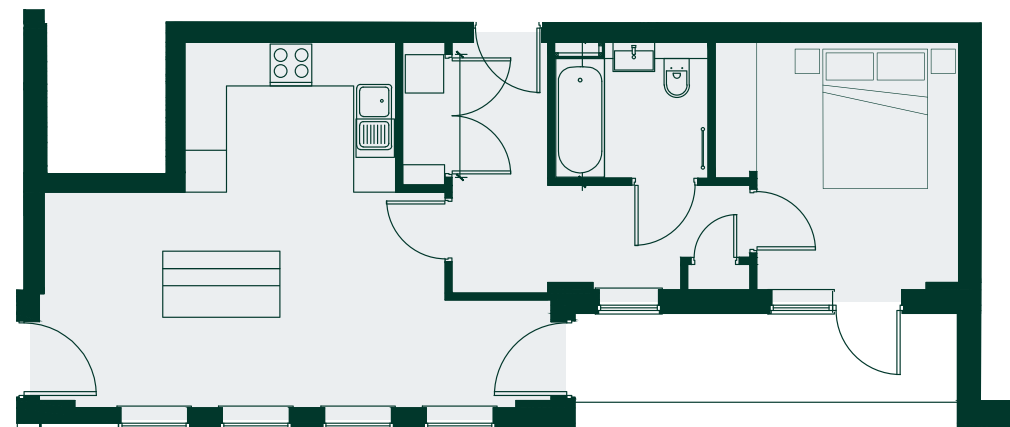
A1.01

Kitchen/Living Area	5.1 x 5.8 m	Hall	2.7 x 1.9 m
Bathroom	2.2 x 1.9 m	Bedroom	3.6 x 3.9 m
Utility Cupboard	1.9 x 0.8 m	Terrace	10.5 x 1.4 m
		Internal Area	52.7 sq. m



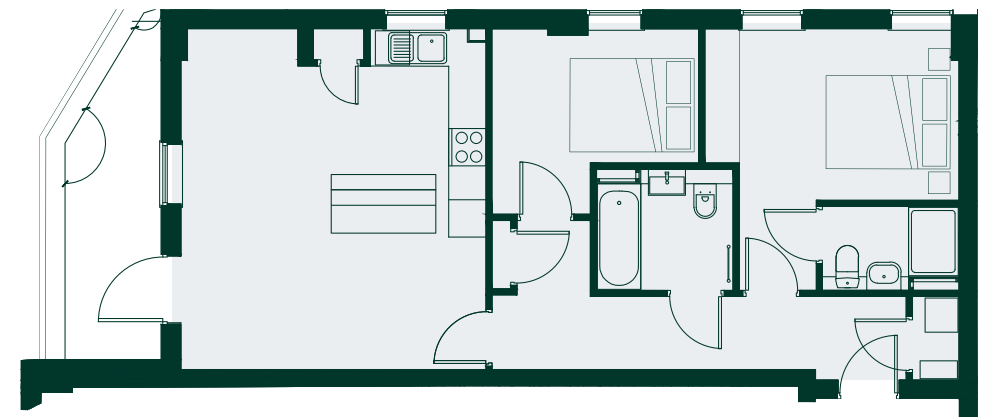
A1.03

Kitchen/Living Area	9.4 x 3.9 m	Bedroom 1	3.9 x 3.4 m
Bathroom	1.9 x 2.2 m	Bedroom 2	5.1 x 2.8 m
Storage Cupboard	1.9 x 0.5 m	Bedroom 3	3.7 x 2.1 m
Hall	1.5 x 3.4 m	En-Suite	1.5 x 2.1 m
Terrace	1.3 x 8.5 m	Internal Area	98.6 sq. m



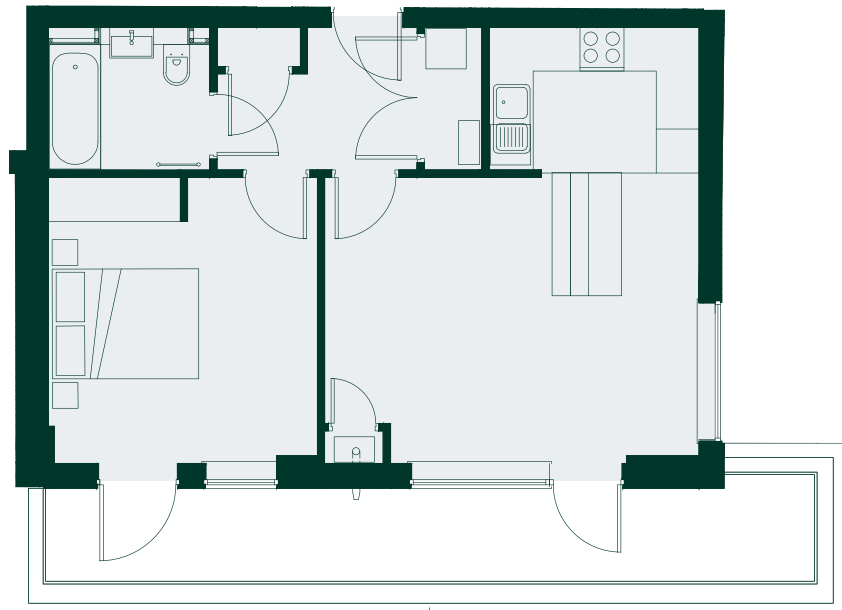
A1.02

Kitchen/Living Area	5.2 x 5.8 m	Hall	3.6 x 4.3 m
Bathroom	2 x 2.2 m	Bedroom	3.6 x 3.5 m
Utility Cupboard	2 x 0.6 m	Terrace	1.3 x 5.5 m
		Internal Area	54.4 sq. m



A1.04

Kitchen/Living Area	5.4 x 4.9 m	Bedroom 1	2.9 x 3.3 m
Bathroom	1.2 x 2.2 m	Bedroom 2	4.2 x 4.1 m
Utility Cupboard	1.4 x 0.75 m	En-Suite	1.4 x 2.2 m
Hall	1.2 x 6.7 m	Internal Area	68.9 sq. m
Terrace	5.6 x 1.5 m		



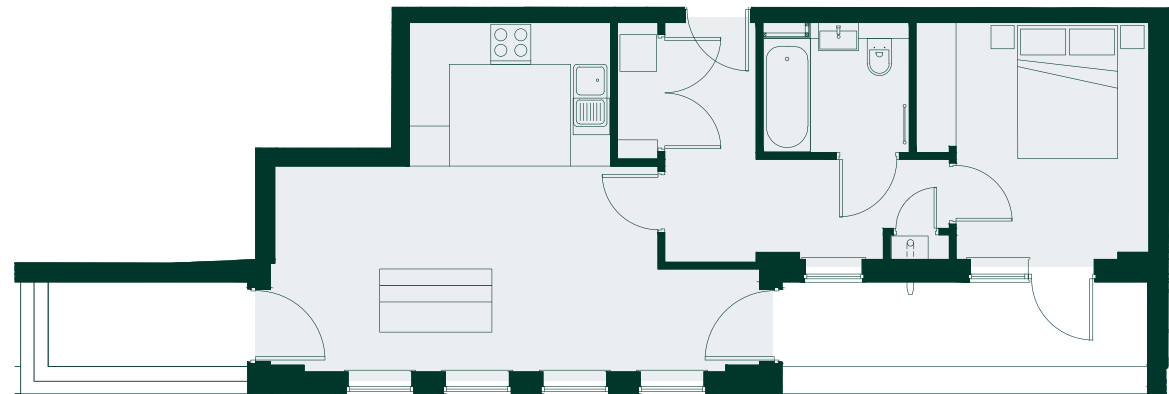
A2.01

Kitchen/Living Area	5.1 x 5.8 m	Hall	2.7 x 1.9 m
Bathroom	2.2 x 1.9 m	Bedroom	3.6 x 3.9 m
Utility Cupboard	1.9 x 0.8 m	Terrace	10.5 x 1.4 m
		Internal Area	52.7 sq. m



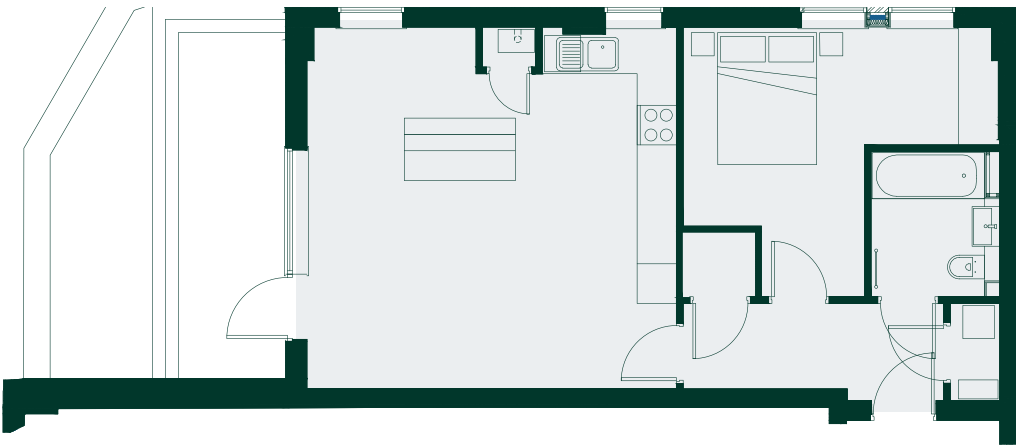
A2.03

Kitchen/Living Area	9.4 x 3.9 m	Bedroom 1	3.9 x 3.4 m
Bathroom	1.9 x 2.2 m	Bedroom 2	5.1 x 2.8 m
Storage Cupboard	1.9 x 0.5 m	Bedroom 3	3.7 x 2.1 m
Hall	1.5 x 3.4 m	En-Suite	1.5 x 2.1 m
Terrace	1.3 x 8.5 m	Internal Area	98.6 sq. m



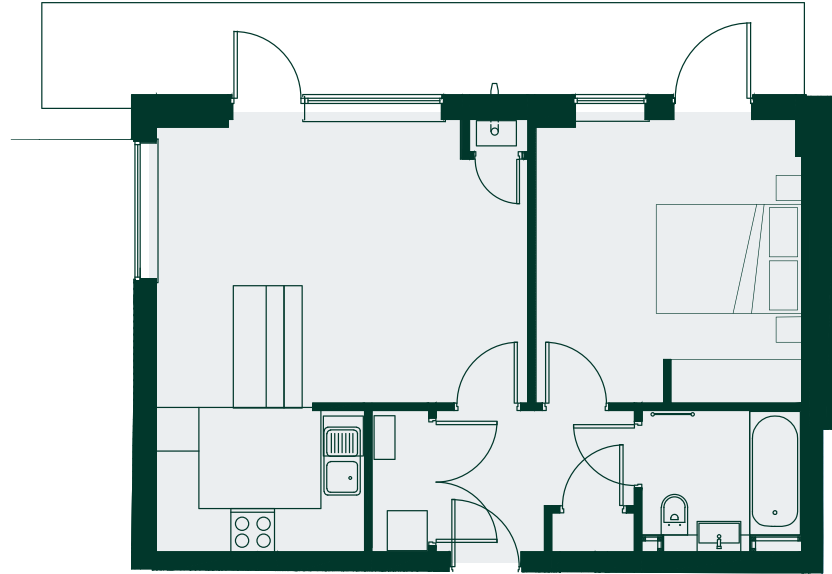
A2.02

Kitchen/Living Area	5.2 x 5.8 m	Hall	3.5 x 4.3 m
Bathroom	2.0 x 2.2 m	Bedroom	3.6 x 3.5 m
Utility Cupboard	2.0 x 0.6 m	Terrace	1.3 x 5.5 m
		Internal Area	54.4 sq. m



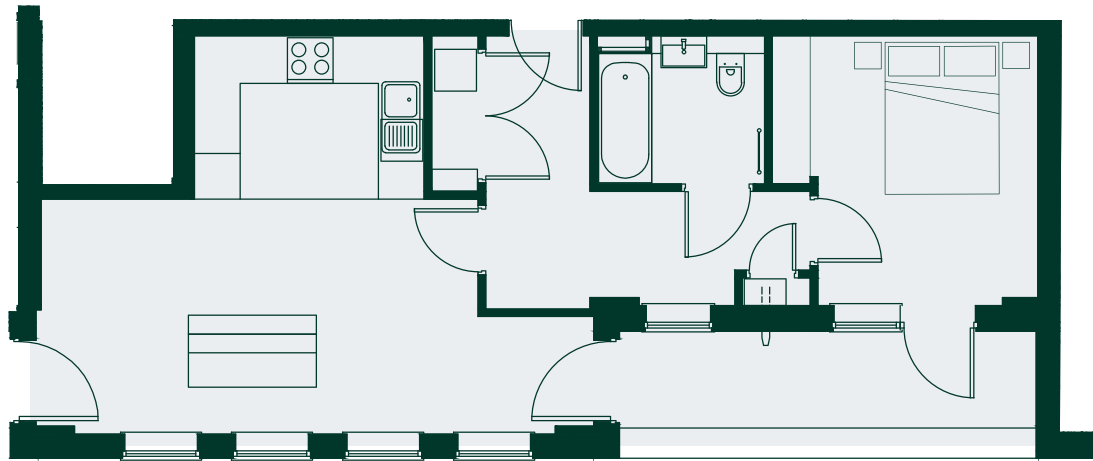
A2.04

Kitchen/Living Area	5.5 x 5.6 m	Bedroom 1	4.1 x 4.8 m
Bathroom	2.2 x 2.0 m	Hall	1.3 x 4.0 m
Storage	0.9 x 1.1 m	Terrace	5.2 x 6.9 m
Utility Cupboard	1.5 x 0.75 m	Internal Area	57.8 sq. m



A3.01

Kitchen/Living Area	5.1 x 5.8 m	Hall	2.7 x 1.9 m
Bathroom	2.2 x 1.9 m	Bedroom	3.7 x 3.9 m
Storage Cupboard	1.9 x 0.8 m	Terrace	10.5 x 1.5 m
		Internal Area	52.7 sq. m



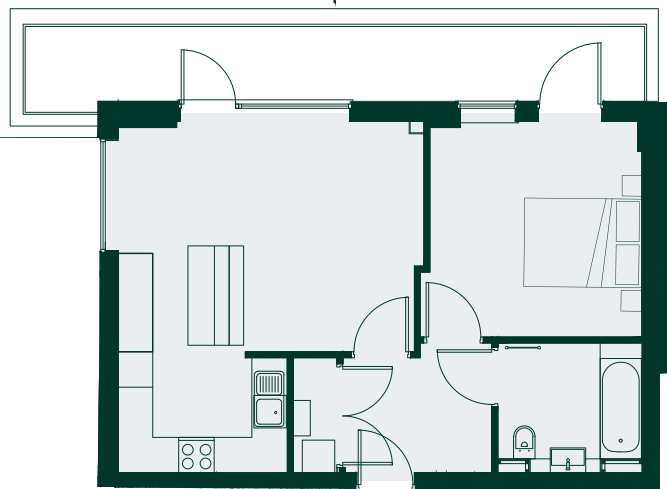
A3.02

Kitchen/Living Area	5.2 x 5.8 m	Hall	3.5 x 4.2 m
Bathroom	2.0 x 2.2 m	Bedroom	3.6 x 3.5 m
Utility Cupboard	2.0 x 0.6 m	Terrace	1.3 x 5.5 m
		Internal Area	54.4 sq. m



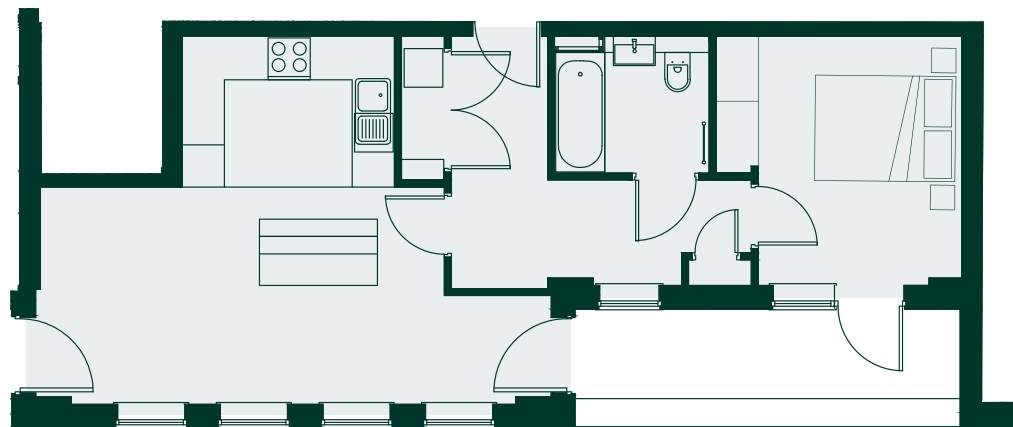
A3.03

Kitchen/Living Area	9.4 x 4.4 m	Bedroom 1	3.8 x 3.4 m
Bathroom	1.9 x 2.2 m	Bedroom 2	5.0 x 2.8 m
Storage Cupboard	1.9 x 0.5 m	Bedroom 3	3.9 x 2.1 m
Hall	3.0 x 3.4 m	En-Suite	1.5 x 2.1 m
Terrace	1.3 x 8.7 m	Internal Area	99.1 sq. m



A4.01

Kitchen/Living Area	5.1 x 5.8 m	Bedroom	3.7 x 3.6 m
Bathroom	2.2 x 1.9 m	Hall	2.7 x 1.9 m
Storage Cupboard	1.9 x 0.8 m	Terrace	10.5 x 1.5 m
		Internal Area	52.7 sq. m



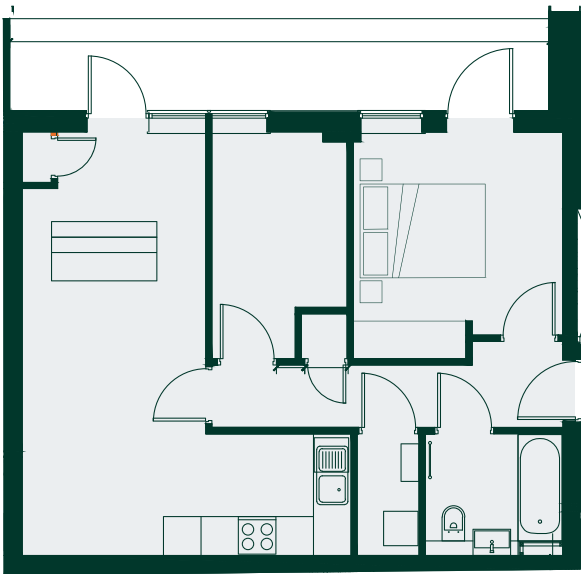
A4.02

Kitchen/Living Area	5.2 x 5.8 m	Hall	3.6 x 4.3 m
Bathroom	2.0 x 2.2 m	Bedroom	3.6 x 3.5 m
Storage Cupboard	2.0 x 0.6 m	Terrace	1.3 x 5.5 m
		Internal Area	54.4 sq. m



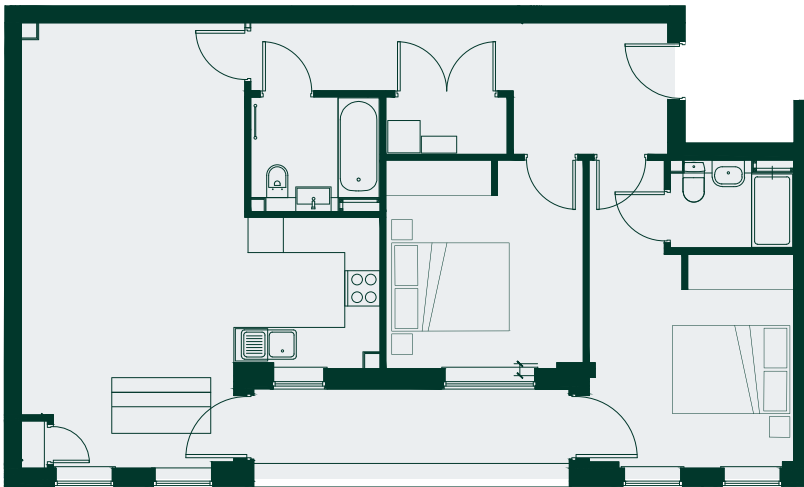
A4.03

Kitchen/Living Area	6.6 x 3.9 m	Bedroom 1	3.3 x 6.2 m
Bathroom	2.0 x 2.2 m	Bedroom 2	2.7 x 4.7 m
Storage Cupboard	0.6 x 2.8 m	Terrace	1.3 x 8.4 m
Hall	1.7 x 7.2 m	En-Suite	1.6 x 2.5 m
		Internal Area	76.3 sq. m



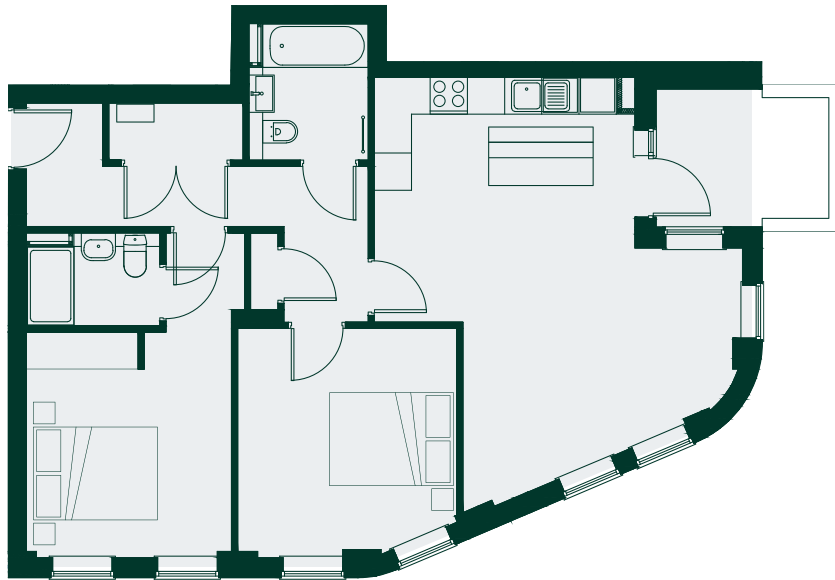
B1.01

Kitchen/Living Area	6.8 x 5.3 m	Bedroom	3.6 x 3.3 m
Bathroom	1.9 x 2.2 m	Study	3.6 x 2.1 m
Utility Cupboard	1.9 x 1.0 m	Terrace	1.4 x 8.6 m
Hall	1.0 x 5.6 m	Internal Area	58.5 sq. m



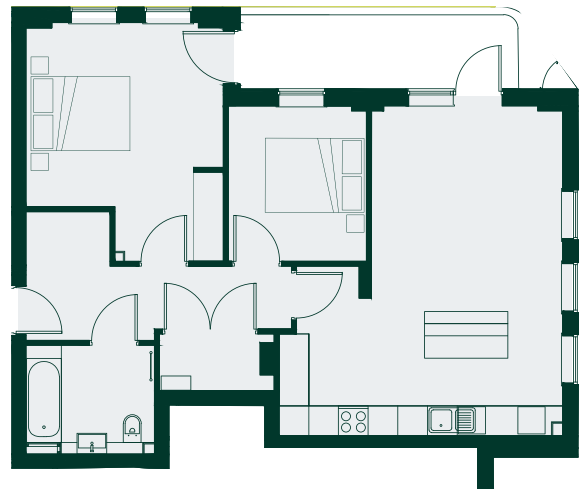
B1.02

Kitchen/Living Area	7.7 x 6.1 m	Bedroom 1	5.2 x 3.5 m
Bathroom	1.9 x 2.2 m	Bedroom 2	3.5 x 3.3 m
Storage Cupboard	0.9 x 2.2 m	En-Suite	1.5 x 2.1 m
Hall	1.2 x 7.0 m	Terrace	1.3 x 5.4 m
		Internal Area	84.2 sq. m



B1.03

Kitchen/Living Area	7.0 x 6.0 m	Bedroom 1	5.2 x 3.3 m
Bathroom	2.2 x 1.9 m	En-Suite	1.6 x 2.2 m
Storage Cupboard 1	0.9 x 2.1 m	Bedroom 2	3.7 x 3.5 m
Storage Cupboard 2	1.2 x 0.4 m	Terrace	2.2 x 2.8 m
Hall	1.0 x 5.5 m	Internal Area	76.8 sq. m



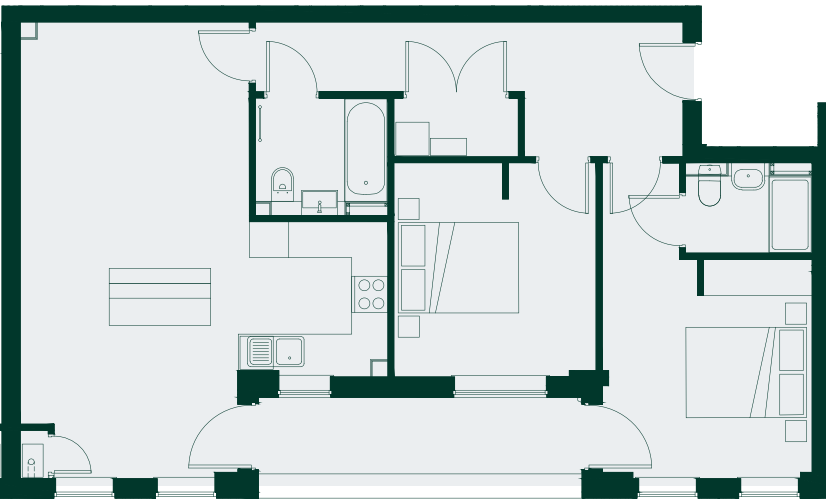
B1.04

Kitchen/Living Area	6.6 x 3.9 m	Bedroom 1	4.7 x 3.9 m
Bathroom	2.0 x 2.6 m	Bedroom 2	3.1 x 2.8 m
Storage Cupboard	1.2 x 2.3 m	Terrace	1.5 x 5.6 m
Hall	1.5 x 5.4 m	Internal Area	77.6 sq. m



B2.01

Kitchen/Living Area	6.8 x 5.2 m	Bedroom	3.7 x 3.4 m
Bathroom	1.9 x 2.2 m	Study	3.6 x 2.1 m
Utility Cupboard	1.9 x 1.0 m	Terrace	1.3 x 8.6 m
Hall	1.0 x 5.6 m	Internal Area	58.5 sq. m



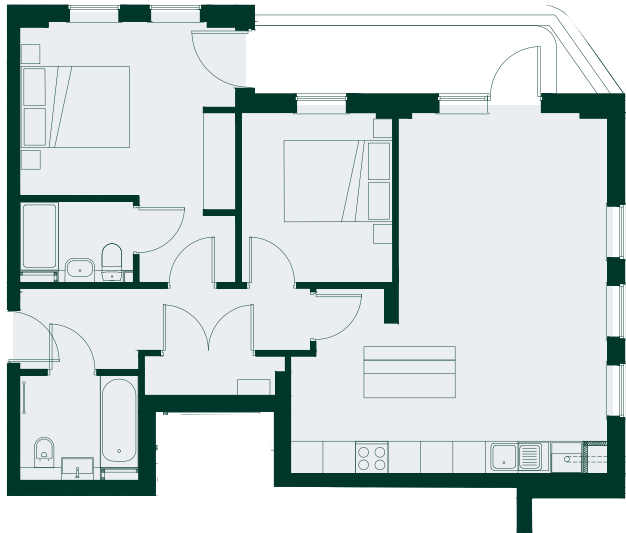
B2.02

Kitchen/Living Area	7.7 x 6.1 m	Bedroom 1	5.2 x 3.5 m
Bathroom	1.9 x 2.2 m	Bedroom 2	3.5 x 3.3 m
Storage Cupboard	0.9 x 2.2 m	En-Suite	1.5 x 2.1 m
Hall	1.2 x 7.0 m	Terrace	1.3 x 5.4 m
		Internal Area	84.1 sq. m



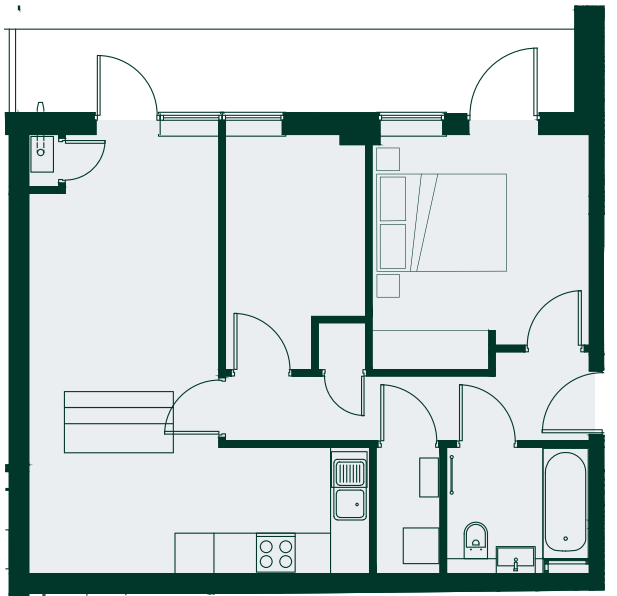
B2.03

Kitchen/Living Area	7.0 x 6.1 m	Bedroom 1	5.2 x 3.3 m
Bathroom	2.4 x 2.2 m	Bedroom 2	3.4 x 3.5 m
Storage Cupboard	0.9 x 2.1 m	Terrace	1.9 x 2.8 m
Hall	2.5 x 5.4 m	Internal Area	79.2 sq. m



B2.04

Kitchen/Living Area	6.6 x 3.8 m	Bedroom 1	4.9 x 4.0 m
Bathroom	2.0 x 2.2 m	Bedroom 2	3.0 x 2.8 m
Storage Cupboard	0.7 x 2.6 m	Terrace	1.3 x 5.6 m
Hall	1.5 x 5.4 m	Internal Area	74.8 sq. m



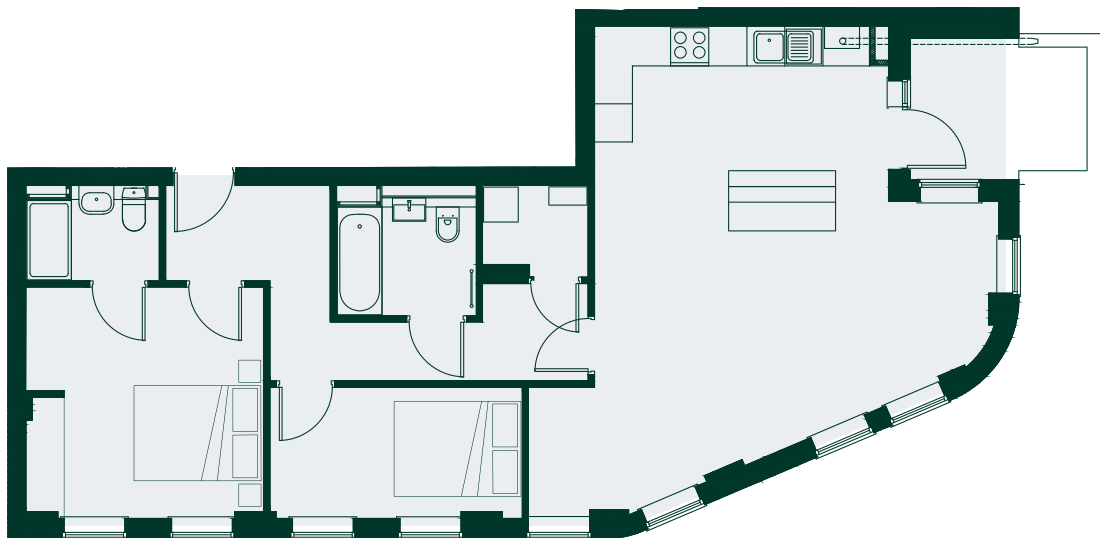
B3.01

Kitchen/Living Area	6.8 x 5.3 m	Bedroom	3.6 x 3.3 m
Bathroom	1.9 x 2.2 m	Study	3.6 x 2.1 m
Utility Cupboard	1.9 x 1.0 m	Terrace	1.3 x 8.6 m
Hall	1.0 x 5.6 m	Internal Area	58.5 sq. m



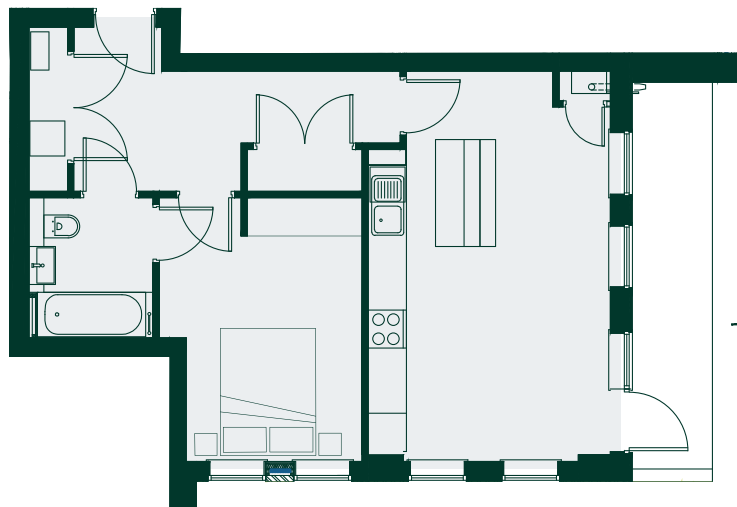
B3.02

Kitchen/Living Area	7.6 x 3.7 m	Hall	1.4 x 8.1 m
Bathroom	2.1 x 2.2 m	Bedroom 1	4.3 x 3.0 m
Storage Cupboard 1	0.9 x 1.8 m	Bedroom 2	4.3 x 2.4 m
Storage Cupboard 2	0.5 x 1.9 m	Terrace	1.3 x 5.4 m
		Internal Area	64.4 sq. m



B3.03

Kitchen/Living Area	7.7 x 4.4 m	Bedroom 1	3.6 x 3.7 m
Bathroom	2.0 x 2.2 m	Bedroom 2	2.0 x 4.0 m
Storage Cupboard	1.2 x 1.6 m	En-Suite	1.5 x 2.1 m
Hall	3.1 x 5.0 m	Terrace	2.2 x 2.7 m
		Internal Area	83.5 sq. m



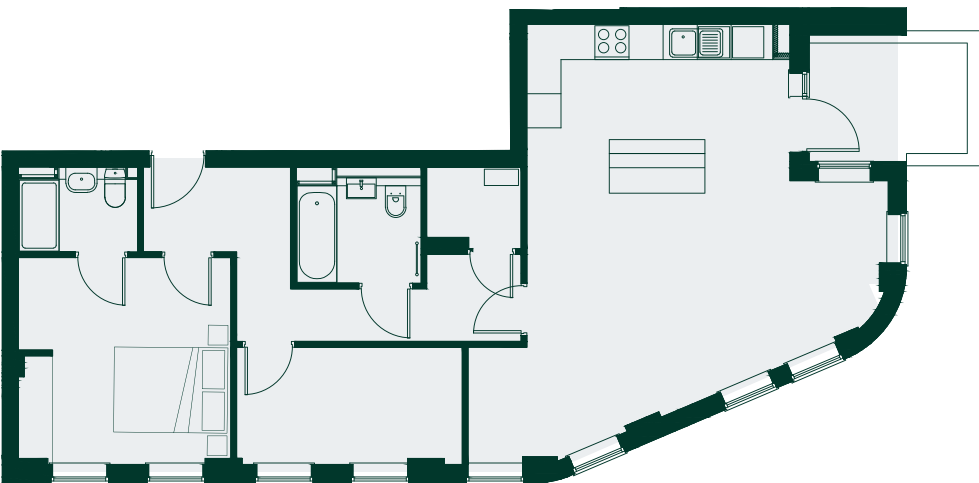
B3.04

Kitchen/Living Area	3.8 x 6.1 m	Hall	5.1 x 2.6 m
Bathroom	2.0 x 2.2 m	Bedroom	3.1 x 4.1 m
Storage Cupboard 1	1.8 x 0.6 m	Terrace	1.2 x 6.1 m
Storage Cupboard 2	0.6 x 2.6 m	Internal Area	52.5 sq. m



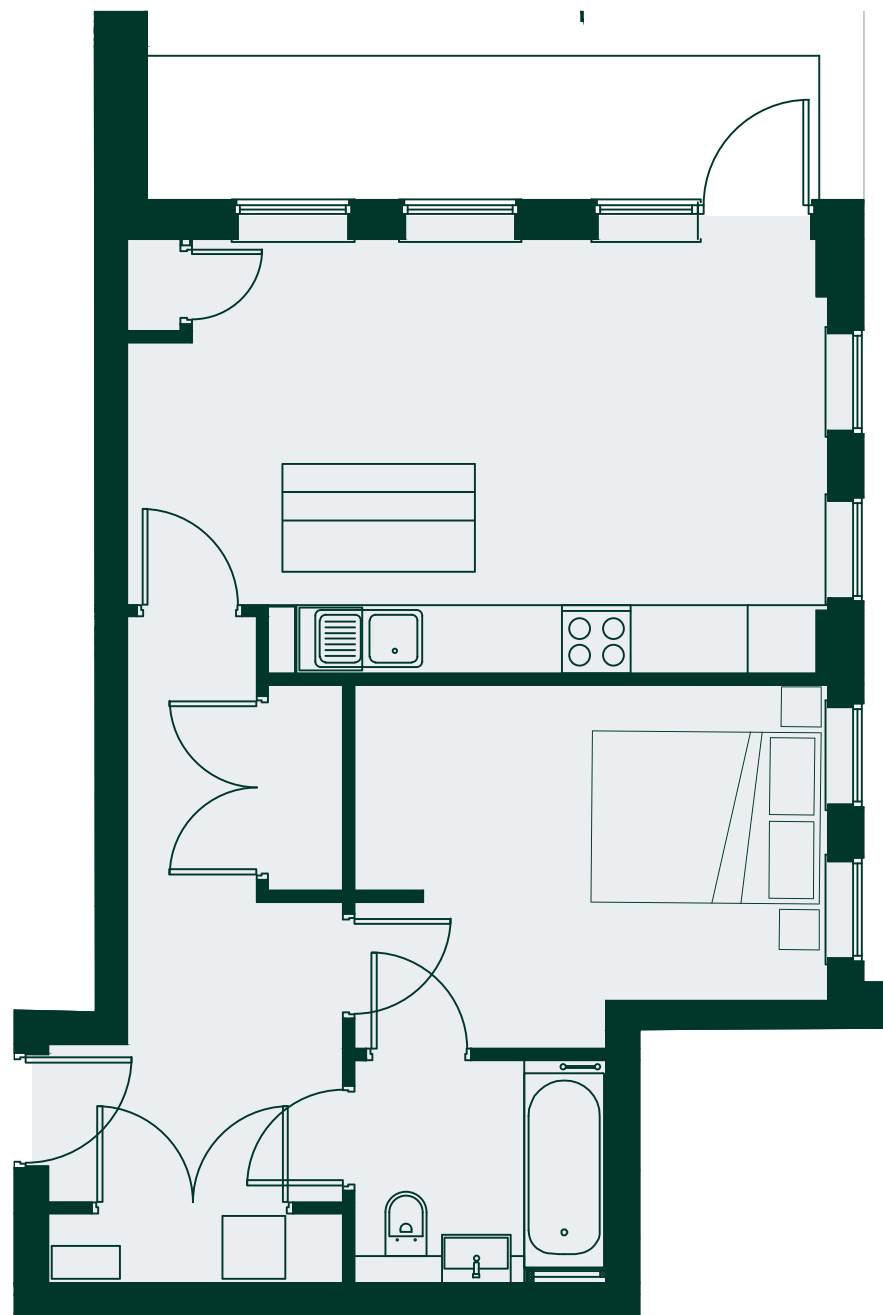
B4.01

Kitchen/Living Area	9.3 x 3.8 m	Bedroom 1	3.7 x 4.6 m
Bathroom	1.9 x 2.2 m	Bedroom 2	3.0 x 4.0 m
Storage Cupboard	0.7 x 1.8 m	En-Suite	1.3 x 2.1 m
Hall	1.2 x 7.2 m	Terrace	1.3 x 9.1 m
		Internal Area	85.3 sq. m



B4.02

Kitchen/Living Area	7.6 x 4.6 m	Bedroom 1	3.7 x 3.7 m
Bathroom	2.0 x 2.2 m	Bedroom 2	2.1 x 4.0 m
Storage Cupboard	1.2 x 1.6 m	En-Suite	1.5 x 2.1 m
Hall	3.1 x 5.0 m	Terrace	2.2 x 2.8 m
		Internal Area	83.3 sq. m



B4.03

Kitchen/Living Area	3.8 x 6.1 m	Hall	5.1 x 2.6 m
Bathroom	2.0 x 2.2 m	Bedroom	3.2 x 4.1 m
Storage Cupboard 1	1.8 x 0.6 m	Terrace	1.2 x 6.0 m
Storage Cupboard 2	0.6 x 2.6 m	Internal Area	52.5 sq. m



Developer Details

Featherstone Homes develop striking homes that are accented by superior attention to detail and are finished with exceptionally high specifications. With over 100 years of collective experience, an acute awareness of customer demands are at the forefront of all constructions – be it a five bedroom house or two bedroom apartment. You can rest assured that it will not only blend perfectly with its surroundings but it will surpass modern living demands.



0203 451 1544
newhomes@hamptons-int.com



020 8874 8822
sthfldssales@dng.co.uk

